



Plantation Forestry Guide

Australian Government – 2022 Plantation Forestry Method

August 2022



Prepared By:

The Carbon Farming Foundation Ltd.

43b Town View Terrace, Margaret River, Western Australia, 6285

The Carbon Farming Foundation is a Corporate Authorised Representative (AFS Representative No.001298535) of True Oak Investments Ltd (ABN 81 002 558 956, AFSL 238184).

Commercial in confidence:

This document is commercial-in-confidence. The recipient of this document agrees to hold all information presented within as confidential and agree not to use, disclose, or allow the use or disclosure of the said information to unauthorised parties, directly or indirectly, irrespective of the acceptance or rejection of the service proposal or at any time before, during or after an agreement has been reached, without prior written consent.

Abbreviations:

ACCU – Australian Carbon Credit Unit

ANREU – Australian National Registry of Emissions Units

CER – Clean Energy Regulator

CEA – Carbon Estimation Area

ERF – Emissions Reduction Fund

GIS – Geographic Information System

PF – Plantation forestry

Disclaimer

1. Introduction: This disclaimer governs the use of this document or product. By using this document or product, you accept this disclaimer in full.
2. General Financial Advice: The information in this document is general financial product advice only. It does not take your personal financial objectives, situation or needs into consideration. We recommend that you read our [Financial Services Guide](#) and consider seeking independent advice before making a financial decision.
3. No advice: The document or product may contain information about carbon offset markets and specific environmental details based on the information provided by you. The information does not purport to recommend or induce a decision to make (or not make) any decision or financial commitment or otherwise in relation to a carbon offsets project. The document or product does not purport to provide, nor should it be construed as legal or financial advice and should not be treated as such. You must not rely on the information in the document or product as an alternative to legal, financial, taxation, accountancy, or any other advice from an appropriately qualified professional. If you have any specific questions about any matter, you should consult an appropriately qualified professional. You should never delay seeking legal advice, disregard legal advice, or commence or discontinue any legal action because of information in the document or product.
4. No representations or warranties: All conclusions guidance and recommendations made in this document or product are the professional opinion of the Carbon Farming Foundation personnel involved. Whilst normal checking of data accuracy was undertaken, except to the extent set out in this document or product, the Carbon Farming Foundation assumes no responsibility or liability for errors in data obtained from the Client, any third party, or external sources.
5. To the maximum extent permitted by applicable law and except as specifically stated in this document or product, we exclude all representations, warranties, undertakings, and guarantees relating to the accuracy, completeness, currency, or usefulness of any information contained or referenced in this document or product; the suitability of the site for any particular purpose or permissibility of any use; that the use of guidance in the document or product will lead to any particular approval, registration, outcome or result; or in particular, that by using the guidance in the document or product you will enter into a carbon project.
6. In using this document or product, you agree that The Carbon Farming Foundation is not nor will not be liable or otherwise responsible for any decision made or any action taken, or any action not taken due to your use of any information presented in the document or product. You must not use the document or product in isolation. We strongly recommend for the user to undertake additional research and seek further consultancy before starting a project.
7. Severability: If a section of this disclaimer is determined by any court or other competent authority to be unlawful and/or unenforceable, the other sections of this disclaimer continue in effect. If any unlawful and/or unenforceable section would be lawful or enforceable if part of it were deleted, that part will be deemed to be deleted, and the rest of the section will continue in effect.
8. Law and jurisdiction: This disclaimer will be governed by and construed in accordance with Western Australian law, and any disputes relating to this disclaimer will be subject to the exclusive jurisdiction of the courts of Western Australia.
9. Our details: In this disclaimer, "we" means (and "us" and "our" refer to) The Carbon Farming Foundation Ltd, which has its principal place of business at 43B Townview Tce, Margaret River. For more information please refer to our website at www.carbonfarming.org.au.

Table of Contents

Introduction to Plantation Forestry	4
What is a Plantation Forestry project?	4
The Methodology	4
Earning carbon credits on your project	4
Eligibility under the methodology	5
Permanence periods.....	5
Discounts	6
Steps to a Plantation Forestry carbon project.....	7
Project implementation	8
Feasibility	8
Design and planning	8
Implementation	9
Project reporting.....	9
Schedule 1: Establish a new plantation project	11
Schedule 2: Converting an existing plantation from a short rotation to a long rotation	14
Schedule 3: Continuing a plantation	17
Schedule 4: Transitioning to a permanent forest	19
Appendices	21
Appendix 1. Management actions to be covered within a Forest Management Plan (FMP)	21
Appendix 2. National Plantation Inventory (NPI) regions.....	22
Appendix 3. Species presumed to have a short rotation	23
Appendix 4. Species presumed to have a long rotation.....	24

Introduction to Plantation Forestry

There are many ways to undertake a plantation forestry (PF) carbon project. We've put together this guide to help simplify the process of understanding and managing a PF carbon project. This section will introduce you to the basics of PF before diving into the different ways you can undertake your own project.

What is a Plantation Forestry project?

A Plantation Forestry (PF) carbon project aims to accumulate or sequester carbon as trees are grown within a plantation. This includes the carbon stored in trees as well as the debris and harvested wood products. By building up carbon stocks within the plantation and its products, you are removing carbon from the atmosphere. This removal - and subsequent increase in your carbon stocks - earn you carbon credits.

The Methodology

A PF carbon project needs to have its own 'methodology', which in simple terms is a rulebook that sets out the guidelines you must follow to receive credits according to the regulator (in this case the Clean Energy Regulator – Australian Government). The methodology outlines project requirements and the approaches that can be taken to measure the increase in carbon through planting trees on your property.

Under the [Carbon Credits \(Carbon Farming Initiative—Plantation Forestry\) Methodology](#) (the methodology), there is no real-time carbon measurement. Instead, the projected carbon stock that will be stored in your project's trees, plantation products, and debris across a 25-year crediting period is calculated in advance using the government's computer modelling tool known as the Full Carbon Accounting Model (FullCAM). FullCAM considers a range of datasets to produce a modelled carbon yield (tonnes carbon per Ha) for any given coordinate, which is then converted into Carbon Dioxide Equivalent (CO₂e), and in turn into carbon credits.

Under the 2022 Plantation Forestry Method, there are four different ways to earn carbon credits, known as Australian Carbon Credit Units (ACCUs). This includes:

1. Establish a new plantation
2. Convert existing plantation from short to long rotation
3. Continuing plantation activities (rather than converting to cleared agricultural land)
4. Transition to permanent forest

Each of these management approaches are referred to as a *Schedule*.

Earning carbon credits on your project

The amount of carbon you're able to store within your plantation, forest products and forest debris is calculated in 'tonnes of carbon dioxide equivalent' (tCO₂e). This is a standard unit for counting greenhouse gas emissions regardless of whether they're from carbon dioxide or another gas, such as methane. Importantly, this unit is what you receive payment for.

1 tonne CO₂e = 1 ACCU

Your tree growth, harvested products and debris are measured as part of an offset report (required at least every five years), and verified through regular audits. This ensures you're managing your project properly, and you are paid for credits correctly. Submission of an offset report triggers the creation and issuance of ACCU's. ACCU's are registered financial products and will be issued in your name into an account within the Government registry. This is called an ANREU account, it is similar to having shares held in your name on a share trading account.

Eligibility under the methodology

The eligibility requirements under this method differ depending on the schedule you are undertaking (represented with a ✓). We have provided a summary in Table 1 and explore this in more detail within each of the schedules later on.

Table 1: Eligibility requirements of a plantation forestry (PF) carbon project. Ticks represent a requirement needs to be met under the associated schedule.

	1) Establish a new plantation	2) Convert from short to long rotation	3) Continuing plantation activities	4) Transition to permanent forest
Project area is located within the ERF's specified rainfall zones map ¹	✓	✓	✓	✓ ²
Project is inside or within 100km of a NPI region ³	N/A	✓	N/A	N/A
Project is inside or within 50km of a NPI region	N/A	N/A	✓	N/A
Clear of forest cover for the past 7 years	✓	N/A	N/A	N/A
Approval required from Department of Agriculture, Fisheries & Forestry	✓	N/A	N/A	N/A
Must currently be operating as short rotation	N/A	✓	N/A	N/A
Plantation likely to convert to non-forest land	N/A	N/A	✓	✓

Permanence periods

To ensure the carbon you've stored remains in your trees and doesn't re-enter the atmosphere, committing to a PF carbon project means you will need to maintain your carbon stocks and keep your plantation going for a period of 25 or 100 years after your first round of carbon credits are issued. This is called your permanence obligation.

¹ This [map of specified regions](#) defines which zones are eligible. Project areas that are outside these zones may still be eligible if they meet other guidelines as defined within the Rule. We can navigate these for you – get in touch!

² Meeting this criteria is only required if you are planning on simply leaving your ex-commercial plantation as a permanent forest. If you are transitioning your ex-commercial plantation to a environmental planting (i.e. native), you do not have to meet this requirement.

³ A map of National Plantation Inventory (NPI) regions has been provided with **Appendix 2**

The Carbon Farming Foundation (ABN 67 645 498 004) is a Corporate Authorised Representative (AFS Representative No.001298535) of True Oak Investments Ltd (ABN 81 002 558 956, AFSL 238184).

For either option, your crediting period will always be 25 years – so, you will only be credited for any carbon your trees sequester over a 25-year period.

Depending on whether you choose to undertake a 25 or 100-year obligation, the Government subtracts a percentage of credits as a non-refundable risk of reversal and permanence buffer. Essentially, they keep some credits as insurance in case of project failures.

The percentage of credits that are subtracted also differs with schedule of PF carbon project you are undertaking. We explore this within each of the schedules later on.

This is a long-term commitment. It is important that you can confidently establish and maintain a plantation project which aligns with both your long-term commercial and on-farm objectives.

Discounts

Specific discounts are applied for different Schedules depending on the permanence period you choose. This discount is made up of the permanent period discount and the risk of reversal buffer, which is a small percentage of credits withheld by the regulator in case there are any temporary carbon losses throughout the project. These have been outlined in Table 2 below:

Table 2: Permanence discounts for the different PF schedules

Permanence period	Relevant schedule	Permanence discount
25 years	<ul style="list-style-type: none"> • Short rotation plantations under Schedule 1 • Schedule 3 projects 	30%
25 years	<ul style="list-style-type: none"> • Long rotation plantation under Schedule 1 • Schedule 2 projects • Schedule 4 projects⁴ 	25%
100 years	All Schedules	5%

⁴ An additional discount of 25% may be applied to Schedule 4 projects whereby you choose to simply retain or plant exclusively commercial species and do not undertake any environmental plantings.

The Carbon Farming Foundation (ABN 67 645 498 004) is a Corporate Authorised Representative (AFS Representative No.001298535) of True Oak Investments Ltd (ABN 81 002 558 956, AFSL 238184).

Steps to a Plantation Forestry carbon project

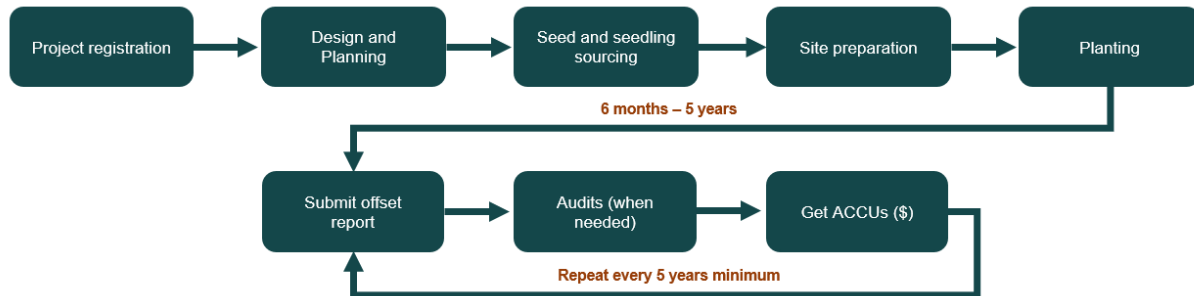


Figure 1: Indicative project stages and timeline

Project implementation

The implementation of your project will largely depend on the schedule(s) you choose to apply to your project. There are however some general activities that must be completed as part of any PF carbon project which are explored within this section.

Feasibility

During this phase you are likely to be working with your team to determine what schedule(s) you want to implement to earn carbon credits. It is also important to identify suitable areas for the project and ensure they're eligible (refer to the eligibility checklist under your plantation schedule).

Design and planning

Produce a Forestry Management Plan (unless Schedule 1)

For projects registered under Schedule 2, 3 or 4 of the 2022 plantation forestry method, the project proponent must create and maintain a forest management plan (FMP). Your FMP identifies the management actions and activities to be undertaken, as well as disturbance events and other relevant information for a project. **Appendix 1** lists the management actions which must be reported on for each CEA. Depending on the schedule you are choosing to implement you may also include information on additional requirements. The FMP needs to be reviewed and approved by a qualified independent person and updated with each submission of an offset report (refer to **Reporting** below).

Create a permanence plan

A permanence plan details how you intend to maintain stored carbon within your project for the entire permanence period of your project. You may include this within your FMP or submit it as a separate document during registration.

Register your Project

Your project must be registered with the Emission Reduction Fund (ERF) to enable the project to claim carbon credits. Details of your project must be submitted along with your FMP and other key documents including:

- Geographic information of the project (including a geospatial map)
- Details about the project proponent and their experience
- Evidence of your land's eligibility
- A forward abatement estimate (i.e., how much carbon you estimate to store).

Project design

Creating a designing and mapping your project is an important step to ensure you are optimising the integration of the project with your existing operation. An example of mapping these areas is provided in Figure 2. There are three key areas to define across your property:

- 5. Project area** – This is the total area of your PF carbon project. It may cover your whole plantation, or a specific area within your plantation.
- 6. Carbon Estimation Area (CEA)** – This is where you will measure the increase in stored carbon. If you are implementing multiple schedules across your plantation, you will have multiple CEAs, as

each CEA must have the same schedule applied. If you're only applying one schedule then your CEA may simply be your whole project area.

7. **Exclusion areas** – Areas within your property that are not used within the plantation and will not contribute towards your project.

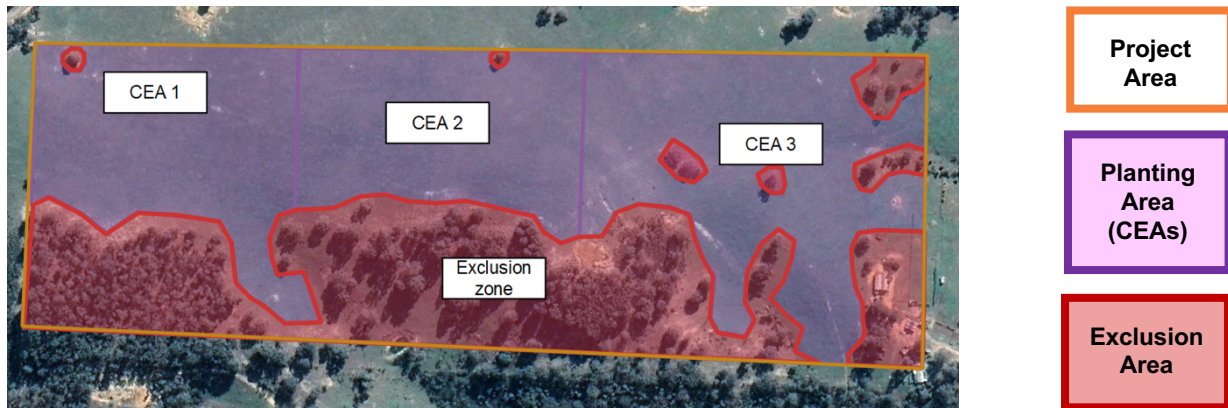


Figure 2: Example of project mapping areas

Implementation

This stage of the project is when the new schedule activities are implemented.

Note: Before you get started on any of your plantation activities, you must have submitted your application for project approval with the ERF. These activities are covered under 'in lieu of newness' provisions and include site preparation and planting activities for Schedule 1, in addition to harvesting, clearing, or thinning the existing forest for Schedules 2, 3 and 4.

Project reporting

Crediting period

The crediting period for a PF carbon project is 25 years regardless of the length of your permanence period. It refers to the period of time in which you earn carbon credits and are required to submit reports to the Regulator throughout this time.

You can choose for your crediting period to start either when you receive your project approval from the Emissions Reduction Fund (ERF – part of the CER), or the day before your first tree planting. Your end date will then be 25 years from this starting date.

Reporting

You are required to provide information on the success of your project (in the form of offset reports) to the Clean Energy Regulator (CER) to determine how many carbon credits you are to be issued. You will receive credits at the end of each reporting round, with your first offsets report due within the first 5 years of the project life (but no earlier than 6 months). The first offset report is a more substantial deliverable than the subsequent reports (for future crediting rounds), as it contains the initial submission of much of your project information. The minimum number of offset reports you are required to submit throughout the 25-year period is 5 (being once every 5 years), however, if you wish to receive credits more frequently - say, to generate more regular cashflow - you can report more often.

The Carbon Farming Foundation (ABN 67 645 498 004) is a Corporate Authorised Representative (AFS Representative No.001298535) of True Oak Investments Ltd (ABN 81 002 558 956, AFSL 238184).

Audits

A third-party audit of project Offset Reports is required by the CER. The number of reports varies depending on CER discretion (based on complexity and scale of the project). Generally speaking, three or four audits are required over the project lifespan. Your first audit should accompany the submission of your first offset report. Timing of subsequent audits are outlined with an Audit Schedule, provided to you by the ERF upon project registration.

Schedule 1: Establish a new plantation project

Project activity

Under this schedule of the PF Method, ACCUs are issued to new plantations based on the carbon that is stored over the lifetime of the project. Importantly, the new plantation must be established on land where there hasn't been forest cover for the past 7 years (e.g., agricultural, or fallow land).

Earning credits

For a Schedule 1 project, the majority of credits are generated in years 4 to 8 of the project as these are the years where the trees are experiencing the fastest growth.

FullCAM modelling will calculate the number of ACCUs to be issued, based on the amount of carbon you have stored within your plantation and its associated wood products over the reporting period. It is expected that carbon will increase over time as the trees grow during the plantations growth phase and will decline during harvesting. Crediting is therefore based on the *long-term average carbon stock* to smooth out the impacts of the harvest on your plantations carbon stores.

Once the project reaches its long-term average carbon stock, crediting stops - however reporting must continue until the end of the crediting period. Short rotation and long rotation examples have been provided in figures 3 and 4 below.

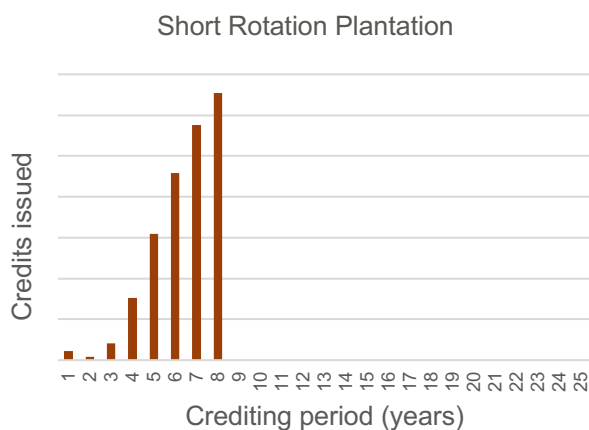


Figure 4: Annual credit accumulation for an example short rotation plantation. Credit issuance stops after year 8, as the credits issued equal long-term average carbon stocks at this point.

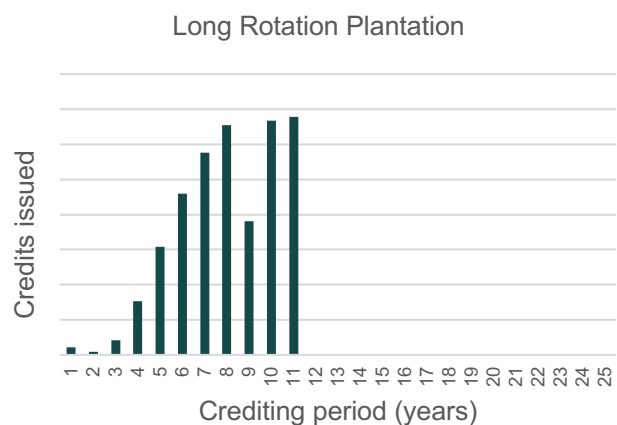


Figure 3: Annual credit accumulation for an example long rotation plantation. Credit issuance stops after year 11, as credits issued equal long-term average carbon stocks at this point. Note the drop in issuance in year 9 of the project corresponds with a thinning event during that year.

Eligibility for a Schedule 1 project

For you to establish an eligible new plantation under the PF method, you need to ensure the following specific Schedule 1 eligibility criteria are met:

- The land you are establishing your new plantation on must not have had a previous plantation or native forest on the land within the previous 7 years (or 5 years if there has been a change in ownership of the land after the clearing event).
- The region you are establishing your new plantation must fall within a [specified zone](#)⁵ and National Plantation Inventory region (refer **Appendix 2**).
- You must submit a plantation forestry notification to the Department of Agriculture, Water and Environment via email to notify the Minister for Agriculture of your new plantation.

Project implementation

Your new plantation can be either short or long rotation. Plantations operating under long rotation will earn a greater number of ACCUs compared to short rotation plantations as they have a greater ability to sequester carbon during their extended growth phase.

There is no restriction on the plantation species selected for the new plantation provided that the plantation is expected to reach forest cover before clear-felling and does not involve growing known weed species.

Implementing your project will follow a similar structure as outlined in Table 2. Key milestones for this project schedule include:

- Submit a Plantation Forestry Notification to the Department of Agriculture, Fisheries and Forestry
- Produce your Permanence Plan (PP) as part of your registration preparation. Ensure this is reviewed by a qualified independent person.
- Model your forward abatement (i.e. how much carbon you expect to store).
- Register your project with the ERF
- Map out your project design including defining your CEAs and any exclusion zones.
- Once your project has been approved you can start to undertake activities to establish your new plantation
- Ongoing reporting will continue throughout the 25-crediting period.

⁵ This [map of specified regions](#) defines which zones are eligible. Project areas that are outside these zones may still be eligible if they meet other guidelines as defined within the Rule.

Table 3: Indicative project timeline

		Months												Ongoing	
Project Stage		1	2	3	4	5	6	7	8	9	10	11	12		
Feasibility	Client registration	█													
	Internal business case	█													
Sign-off	Sign contract			█											
Design & Planning	Permanence plan / forest management plan					█									
	Project registration						█	█							
Implementation	Implement schedules									█	█	█	█	█	█
Monitoring & reporting	Reports													█	█
	Audits													█	█

Schedule 2: Converting an existing plantation from a short rotation to a long rotation

Project activity

Under Schedule 2, ACCUs are issued to plantations when they are converted from a short rotation to a long rotation.

Earning credits

The number of credits you will earn is based on the *difference* between the baseline scenario (i.e., if your plantation was to remain on a short rotation) and the additional carbon now being stored by switching your plantation to long rotation.

As with Schedule 1, ACCU's are issued for every project report you submit to the Regulator (Clean Energy Regulator – CER) and crediting is based on the long-term net carbon stock to smooth out the impacts of harvesting. FullCAM modelling will calculate the number of ACCUs to be issued, which will then be issued evenly across the first 15 years of your project (refer figure 5). Although you only receive credits for 15 years, as with Schedule 1 your **Crediting period** is set at 25 years – so project obligations such as reporting and auditing remain.

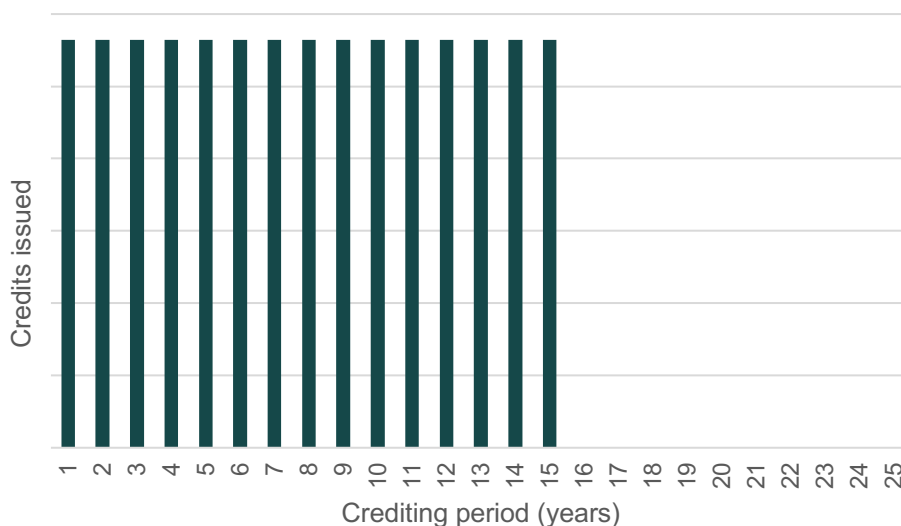


Figure 5: An even proportion of the long-term carbon stock is issued across the first 15 years of the project life.

Eligibility for a Schedule 2 project

For you to convert your plantation from a short to long rotation under Schedule 2 of the method, you must meet the following criteria:

- Your plantation forest must be in, or within 100km of a national plantation inventory (NPI) region. Refer to **Appendix 2** for a list of the NPI regions.
- The region you are establishing your new plantation must fall within a [specified zone](#).
- You must currently be running a short rotation species plantation (a list of species presumed to be short rotation has been provided in **Appendix 3**)

Project implementation

The conversion of your plantation may occur either part way through the short rotation cycle, or following the harvest of a short rotation. If no rotation was in progress, the first rotation after your project approval needs to be a long rotation.

Additional registration requirements

Under this Schedule, you need to submit some additional evidence to meet the eligibility requirements. This includes:

- Evidence that your plantation was being managed as a short rotation, and as a result of implementing the project it will now be managed as a long rotation.
- Forest Management Plan (FMP), signed off by a qualified independent person.

Species restrictions

The PF carbon method has restrictions on which species can be planted in your short and long rotations. These species have been divided into 3 categories, with an extensive list provided within **Appendix 3 and 4**.

8. **Species presumed to have a short rotation:** These species can only be planted during your *baseline* rotation (i.e. the rotation prior to your plantation conversion)
9. **Species presumed to have a long rotation:** These species must only be grown in the long rotation (i.e. the rotation after your plantation conversion)
10. **Undefined rotation (UR):** These species require additional evidence of your intent to manage them as either a long or short rotation species as they can be grown as both. Should you be choosing to convert your plantation mid-way through your short rotation cycle, additional evidence to support your new management must be provided including:
 - a. Evidence of at least one rotation of the same species harvested as a short rotation species on the project area,
 - b. Data demonstrating the relevant species has been harvested as short or long rotation within 100kms to the proposed project, or
 - c. A financial assessment by an independent auditor showing that a long rotation would not have been commercially viable prior to this project being undertaken.

Timeline

The implementation of your project will follow a similar timeline to Schedule 1, which is outlined in Table 2. Key milestones for Schedule 2 include:

- Produce your FMP and PP as part of your registration preparation. Gather any other additional documentation that may be required for your project.
- Model your forward abatement (i.e. how much carbon you expect to store).
- Register your project with the ERF
- Map out your project design including defining your CEAs and any exclusion zones.
- Once your project has been approved you can start to undertake activities to convert your plantation from short to long rotation.
- Ongoing reporting will continue throughout the 25-crediting period.

Schedule 3: Continuing a plantation

Project activity

There is an increasing trend for Australia's plantation estates being converted to non-forest, largely agricultural land, with a 10% decline observed between 2014-15 and 2019-20. This Schedule therefore awards ACCU's to plantations that continue their operations rather than converting to non-forest land.

Earning credits

Under a Schedule 3 project, the baseline scenario is considered to be a single harvest event followed by the conversion of the land to non-forest land use. You therefore earn ACCU's based on the amount of carbon you are storing in your plantation by continuing your operations.

Crediting under this Schedule mirrors that of Schedule 2, whereby ACCU's are issued for every project report you submit to the Regulator (Clean Energy Regulator – CER) and crediting is based on the long-term net carbon stock to smooth out the impacts of harvesting. FullCAM modelling calculates the number of ACCUs to be issued, which will then be issued evenly across the first 15 years of your project (refer figure 5). Although you only receive credits for 15 years, your **Crediting period** is set at 25 years.

Eligibility for a Schedule 3 project

For you to continue to operate your plantation under Schedule 3 of the method, you must meet the following criteria:

- The region you are establishing your new plantation must fall within a [specified zone](#).
- No part of the land is further than 50km from the nearest national plantation inventory (NPI) region. Refer to **Appendix 2** for a list of NPI regions.
- In the absence of the ERF, your plantation would otherwise be converted to non-forest land.
- The plantation forest is of, or was harvested at, an age that is within 2 years or older than the relevant default clearfell age for that species (refer to **Appendix 3** and **4** for default clearfell ages of long and short rotation species).

Project implementation

The continuation of your plantation can occur at different stages of your plantation operations. These include:

1. Managing an existing plantation (aged 24 months or older than the default clearfell age for the species) until harvest and then replanting at the end of a planned rotation,
2. Immediately harvesting and replanting, or
3. Replanting on land that has been harvested in the last 7 years

There are no restrictions on the species selected for the plantation provided that the plantation is expected to reach forest cover before clear-felling and does not involve growing known weed species.

Additional registration requirements

Given the nature of this schedule, projects must submit strong evidence for *additionality*⁶, whereby you must prove the plantation would likely have converted to non-forest land under business as usual (BAU). Key documentation which must be submitted to meet this criteria includes:

- FMP, which is signed off by a qualified independent person who deems the plan as viable for ongoing cycles of harvesting and planting
- Transformation statement (which articulates how the project is different to the plantations business as usual (BAU))
- An independent financial assessment, including evidence on the BAU scenario (i.e. the likely conversion to non-forested land), and a land valuation by a qualified independent rural property valuer.

Timeline

The implementation of your project will follow a similar timeline to Schedule 1, which is outlined in Table 2. Key milestones for Schedule 4 include:

- Obtain an independent financial assessment and land valuation
- Produce your FMP, PP and transformation statement as part of your registration preparation. Gather any other additional documentation that may be required for your project.
- Model your forward abatement (i.e. how much carbon you expect to store).
- Register your project with the ERF
- Map out your project design including defining your CEAs and any exclusion zones.
- Once your project has been approved you can start to undertake activities to convert your plantation from short to long rotation.
- Ongoing reporting will continue throughout the 25-crediting period.

⁶ Under the ERF, the definition of *additionality* is that the project 'would be unlikely to occur under normal business conditions, in the absence of the ERF.'

The Carbon Farming Foundation (ABN 67 645 498 004) is a Corporate Authorised Representative (AFS Representative No.001298535) of True Oak Investments Ltd (ABN 81 002 558 956, AFSL 238184).

Schedule 4: Transitioning to a permanent forest

Project Activity

Similarly to Schedule 3, the ERF has developed this Schedule to reduce the amount of plantation estate land being converted to non-forest, largely agricultural, land. Under Schedule 4, you are awarded ACCUs for transitioning an existing plantation forest to a permanent not-for-harvest forest. Land which has had a for-harvest plantation forest on it but harvesting or replanting sometime in the last seven years is also permitted under this Schedule.

Note: under the method, you are allowed to undertake a single harvest event during your crediting period where the harvested areas are then replanted with a permanent environmental planting.

Earning credits

ACCU's are generated under this Schedule for the continued carbon stored within the existing plantation and any new carbon stored in the trees that are still growing. Should you complete any in-fill plantings, you will also earn ACCU's for this new carbon stored.

As with Schedules 2 and 3, crediting is based on the long-term net carbon stock to smooth out the impacts of harvesting. FullCAM modelling calculates the number of ACCUs to be issued, which will then be issued evenly across the first 15 years of your project (refer figure 5). Although you only receive credits for 15 years, your **Crediting period** is set at 25 years.

Eligibility for a Schedule 4 project

For you to continue to operate your plantation under Schedule 3 of the method, you must meet the following criteria:

- Prepared to transition to permanent (not for harvest) forest.
- In the absence of the ERF, your plantation would otherwise be converted to non-forest land.

Project implementation

There is flexibility around how plantation forests are transitioned to a permanent not-for-harvest forest. These options include:

4. **Remnant plantation** – no clearing is undertaken and the plantation is simply retained as a permanent forest
5. **Permanent planting** – the plantation is cleared and is re-planted or coppiced with a permanent forest
6. **Gradual transition to environmental planting** – the plantation forest is cleared and gradually replaced with environmental plantings.

The permanent forest will need to be actively managed and has different requirements and restrictions to the other Schedules under the method. For examples, thinning and pruning can only be undertaken where it is consistent with the management plans outlined in your FMP. There are also additional species restrictions.

The Carbon Farming Foundation (ABN 67 645 498 004) is a Corporate Authorised Representative (AFS Representative No.001298535) of True Oak Investments Ltd (ABN 81 002 558 956, AFSL 238184).

Additional registration requirements

Given the nature of this schedule, projects must submit strong evidence for *additionality*, whereby you must prove the plantation would likely have converted to non-forest land under business as usual (BAU). Key documentation which must be submitted to meet this criteria includes:

- FMP, which is signed off by a qualified independent person who deems the plan as viable for ongoing cycles of harvesting and planting
- Transformation statement (which articulates how the project is different to the plantations business as usual (BAU))
- An independent financial assessment, including evidence on the BAU scenario (i.e. the likely conversion to non-forested land), and a land valuation by a qualified independent rural property valuer⁷.

Species restrictions

As outlined within the discounts section of this guide, additional discounts may apply depending on the species you choose to keep in your permanent forest. Although you are able to simply choose to keep your plantation forest species, you will receive less ACCUs for commercial species than if you were to replant your forest with environmental plantings (i.e. species native to the local area).

Timeline

The implementation of your project will follow a similar timeline to Schedule 1, which is outlined in Table 2. Key milestones for Schedule 3 include:

- Obtain an independent financial assessment and land valuation³
- Produce your FMP, permanence plan and transformation statement as part of your registration preparation. Gather any other additional documentation that may be required for your project.
- Model your forward abatement (i.e. how much carbon you expect to store).
- Register your project with the ERF
- Map out your project design including defining your CEAs and any exclusion zones.
- Once your project has been approved you can start to undertake activities to convert your plantation from short to long rotation.
- Ongoing reporting will continue throughout the 25-crediting period.

⁷ The requirement of a financial assessment and valuation may be waived for Schedule 4 environmental planting projects where a plantation forest is not permitted to be replanted for regulatory or other reasons, but an environmental planting would be allowed.

The Carbon Farming Foundation (ABN 67 645 498 004) is a Corporate Authorised Representative (AFS Representative No.001298535) of True Oak Investments Ltd (ABN 81 002 558 956, AFSL 238184).

Appendices

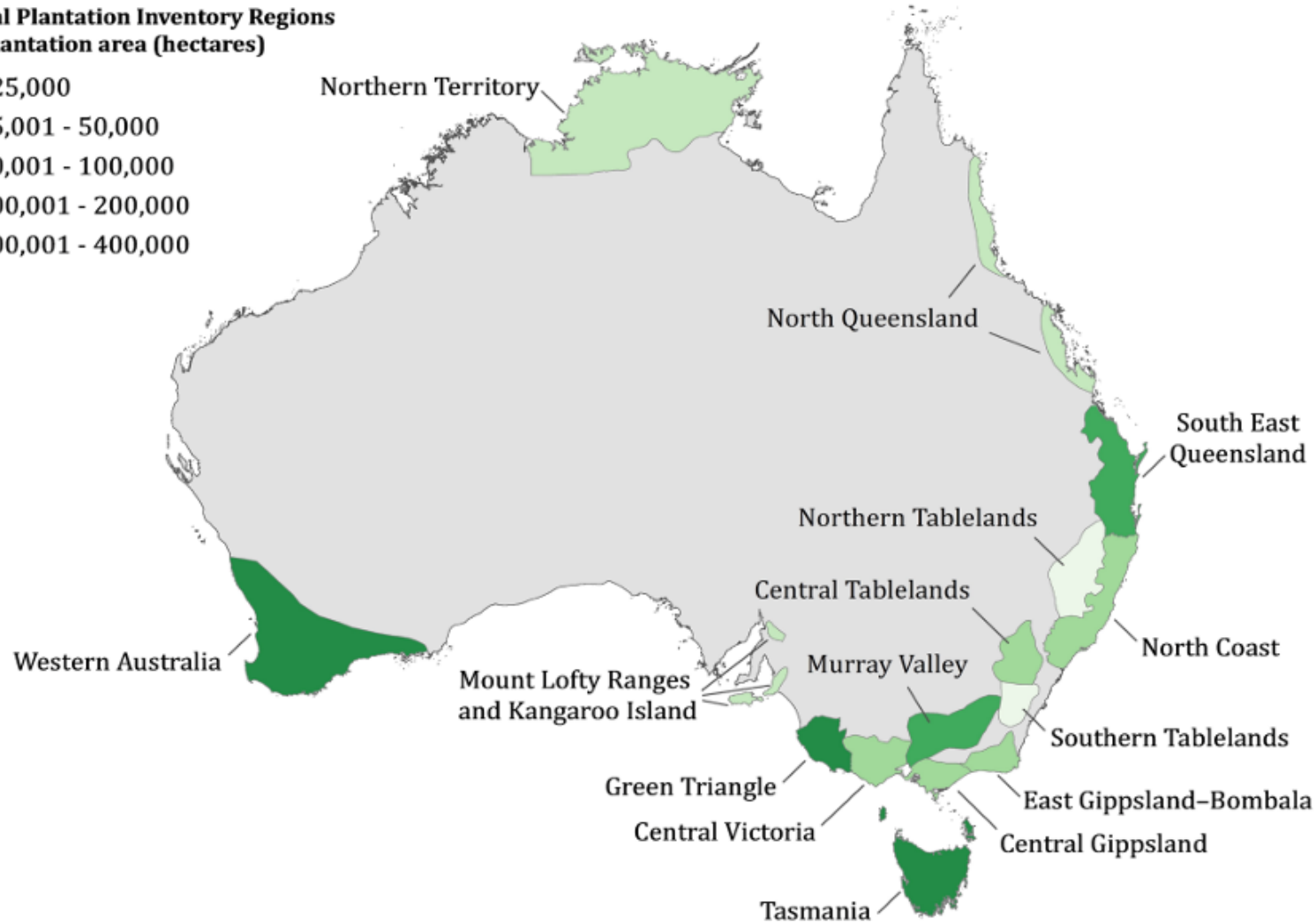
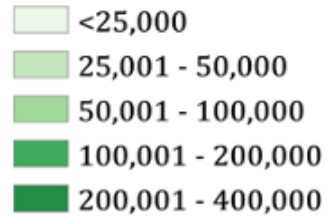
Appendix 1. Management actions to be covered within a Forest Management Plan (FMP)

Activities required to be included within FMP:

- Planting
- Seeding
- Coppicing
- Fertilisation
- Weed control
- Pruning
- Thinning with/without harvest
- Controlled burn
- Salvage harvest
- Clearfelling with/without harvest
- Chopper rolling
- Windrow and burn

Appendix 2. National Plantation Inventory (NPI) regions

National Plantation Inventory Regions
Total plantation area (hectares)



The Carbon Farming Foundation (ABN 67 645 498 004) is a Corporate Authorised Representative (AFS Representative No.001298535) of True Oak Investments Ltd (ABN 81 002 558 956, AFSL 238184).

Appendix 3. Species presumed to have a short rotation

National plantation inventory (NPI) region	Species	Maximum clearfell age (years)	Default clearfell age (years)
East Gippsland - Bombala	<i>Eucalyptus nitens</i>	21	12
East Gippsland - Bombala	<i>Eucalyptus globulus</i>	21	12
Central Gippsland	<i>Eucalyptus regnans</i>	21	12
Central Gippsland	<i>Eucalyptus nitens</i>	21	12
Central Gippsland	<i>Eucalyptus globulus</i>	21	12
Central Victoria	<i>Eucalyptus nitens</i>	21	12
Central Victoria	<i>Eucalyptus globulus</i>	21	12
Green Triangle	<i>Eucalyptus globulus</i>	21	12
Mount Lofty Ranges and Kangaroo Island	<i>Eucalyptus globulus</i>	21	12
Murray Valley	<i>Eucalyptus globulus</i>	21	13
Northern Territory	<i>Santalum album</i>	21	15
Northern Territory	<i>Pinus caribaea</i>	21	13
Northern Territory	<i>Callitris intratropica</i>	21	12
Northern Territory	<i>Acacia mangium</i>	21	8
North Queensland	<i>Santalum album</i>	21	15
South East Queensland	<i>Eucalyptus dunnii</i>	21	12
Tasmania	<i>Eucalyptus globulus</i>	21	10
Western Australia	<i>Santalum album</i>	21	15
Western Australia	<i>Eucalyptus astringens</i>	21	12
Western Australia	<i>Eucalyptus loxophleba</i>	21	12
Western Australia	<i>Eucalyptus globulus</i>	21	12

Appendix 4. Species presumed to have a long rotation

National plantation inventory (NPI) region	Species	Default clearfell age (years)
East Gippsland – Bombala	<i>Pinus radiata</i>	30
East Gippsland – Bombala	<i>Pinus pinaster</i>	30
Central Gippsland	<i>Pinus radiata</i>	30
Central Gippsland	<i>Pinus pinaster</i>	30
Central Tablelands	<i>Pinus radiata</i>	30
Central Tablelands	<i>Pinus pinaster</i>	30
Central Victoria	<i>Pinus radiata</i>	30
Central Victoria	<i>Pinus pinaster</i>	30
Central Victoria	<i>Eucalyptus cladocalyx</i>	27
Green Triangle	<i>Pinus radiata</i>	30
Green Triangle	<i>Pinus pinaster</i>	30
Mount Lofty Ranges and Kangaroo Island	<i>Pinus radiata</i>	30
Mount Lofty Ranges and Kangaroo Island	<i>Pinus pinaster</i>	30
Murray Valley	<i>Pinus radiata</i>	30
Murray Valley	<i>Pinus pinaster</i>	30
North Coast	<i>Eucalyptus pilularis</i>	45
North Coast	<i>Corymbia maculata</i>	45
North Coast	<i>Eucalyptus grandis</i>	45
North Coast	<i>Eucalyptus aggregata</i>	45
North Coast	<i>Eucalyptus cloeziana</i>	45
North Coast	<i>Eucalyptus laevaeopinea</i>	45
North Coast	<i>Eucalyptus saligna</i>	45
North Coast	<i>Araucaria cunninghamii</i>	50
North Coast	<i>Pinus radiata</i>	30
North Coast	<i>Pinus pinaster</i>	30
North Coast	<i>Pinus taeda</i>	30
North Coast	<i>Pinus elliotii</i>	30

The Carbon Farming Foundation (ABN 67 645 498 004) is a Corporate Authorised Representative (AFS Representative No.001298535) of True Oak Investments Ltd (ABN 81 002 558 956, AFSL 238184).

North Coast	<i>Pinus caribaea x Pinus elliotii</i>	30
North Queensland	<i>Araucaria cunninghamii</i>	50
North Queensland	<i>Pinus elliotii</i>	30
North Queensland	<i>Pinus caribaea</i>	30
North Queensland	<i>Pinus Caribaea x Pinus elliotii</i>	30
Northern Tablelands	<i>Pinus elliotii</i>	30
Northern Tablelands	<i>Pinus radiata</i>	30
Northern Tablelands	<i>Pinus pinaster</i>	30
Northern Territory	<i>Khaya senegalensis</i>	25
South East Queensland	<i>Araucaria cunninghamii</i>	50
South East Queensland	<i>Eucalyptus argophloia</i>	45
South East Queensland	<i>Eucalyptus cloeziana</i>	45
South East Queensland	<i>Pinus caribaea</i>	30
South East Queensland	<i>Pinus elliotii</i>	30
South East Queensland	<i>Pinus Caribaea x Pinus elliotii</i>	30
South East Queensland	<i>Corymbia citriodora</i>	30
Southern Tablelands	<i>Pinus radiata</i>	30
Northern Tablelands	<i>Pinus pinaster</i>	30
Western Australia	<i>Pinus pinaster</i>	30
Western Australia	<i>Pinus radiata</i>	30