



CFF Carbon
Farming
Foundation
Services Brochure

April 2024



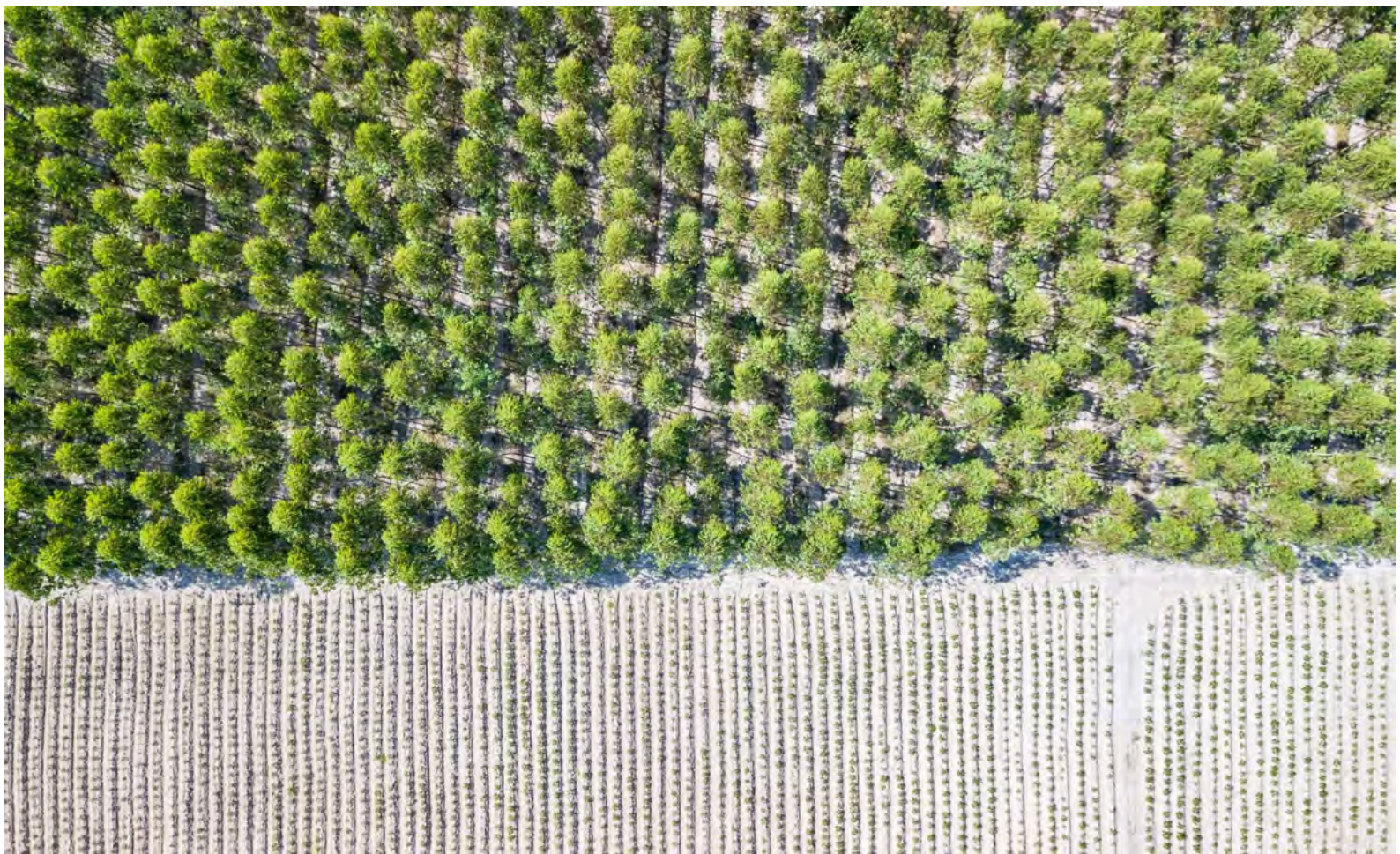
Australian
Carbon Industry
Code of Conduct
SIGNATORY

Who we work with

We work with landowners who are driven to bring high-quality, nature positive carbon projects to life that produce benefits beyond credit generation.

CFF supports landowners who are keen to tap into the carbon farming opportunity and support our mission to mitigate the worst effects of climate change and biodiversity loss. Whether you're looking to earn carbon credits to diversify your income, run a carbon neutral operation or simply leave a legacy for future generations, we are here to support you undertake your own carbon farming project.

We apply our passion, expertise and knowledge in environmental markets to empower and inspire landholders to take urgent action on ecosystem restoration and protection.



Why carbon farming?

The Opportunity

- Be rewarded for good land management practices
- Build productivity and resilience
- Increase profitability, diversify your income stream and achieve carbon neutrality through insetting
- Contribute to nature-based solutions to tackle climate change and biodiversity loss

Our Solution

End to end support

Choose from a menu of services from pre-feasibility through to crediting and reporting. You pay only for the support you need to make your project a success.

You keep 100% of the carbon credits

Unlike other carbon companies, we don't keep any of your credits. Our services are offered on a fee-for-service basis so you can maximise the value of your credits.

Clear advice

We have a transparent fee structure that outlines all costs from the get-go.

No lock-in contracts

There is no obligation to continue with ongoing services beyond what you have requested from the CFF.



Why work with CFF?

As a registered charity, we invest our profits back into ecosystem restoration. We have proven experience in designing and managing carbon projects through to credit generation and reporting.

Our specialty is in projects that deliver ecosystem restoration at scale across Australia. Our authentic commitment to restoring Australian landscapes through the exceptional delivery of carbon projects tells a compelling story about our investment in better land management practices.

Last year we worked with **29 farm operations** to understand the feasibility of carbon farming on their land. We **successfully registered 14** into ACCU generating projects across **5 States** in Australia.

We offer consulting services on:

- Feasibility and due diligence
- Project registration and implementation
- Ongoing project management
- Monitoring, reporting and verification



Projects we support

We support three methods under Australia's ACCU Scheme:



Planting native trees on land that has been clear of forest for the past seven years. This could be at mass-scale or integrated into your farming operation by creating shelter belts and/or planting on underutilised land.

Improving forest management practices to enhance long term carbon stocks, by applying one of the following activities:

- Establish new plantation
- Convert existing plantation from short to long rotation
- Avoid conversion of forest to non-forested land
- Transition to permanent forest



Introducing new or improved land management practices to store additional carbon in the soil. Practices may include:

- Stubble retention
- No-till
- Cover cropping
- Using legume species
- Soil amelioration
- Changed grazing management

Our partnership model

You manage the carbon, we manage the compliance

We stick to process, compliance and technical advice so you can do what you do best – managing your land. We specialise in optimising project design and delivery for the best outcomes.

As a **remote support team** we can keep our costs to a minimum, bringing in local experts in your area when required.

Landholder

- Provide the land and project funding.
- Oversee the on-ground management of the carbon project.
- Collate data and project information to allow project registration, reporting and administration.
- Record keeping.
- Engage and manage third-party contractors. This helps us to keep our fees low.
- Own the project and keep the credits

CFF

- Assess project eligibility and feasibility.
- Provide project registration, design and establishment support.
- Manage offset reporting and auditing, credit issuance and variations.
- Other technical and compliance advice and services.
- Connect you with local experts.

Local experts

- Provide legal, tax or financial advice as needed.
- Provide locally relevant technical guidance on project design and implementation (e.g. species selection).
- Supply inputs for the project (e.g. seedlings, labour).
- Support or undertake project implementation activities (e.g. soil sampling contractors).

Our services

We offer a range of solutions for each stage of a carbon project, with the freedom for landholders to choose what they need when they need it. Current products and services are summarised below.

Feasibility 0-2 months

Sign-off 3-6 months

Feasibility Services

- Eligibility and suitability assessment
- Yield mapping / modelling
- Financial and risk analysis
- Scenario comparisons
- Recommendations to enhance returns and support business case
- Service delivery proposal tailored to your project requirements.

Design & planning 3-6 months

Implementation 6-12 months

Project Setup Services

- Project approvals and registration
- Delivery planning and engagement of contractors
- Performance optimised project design and mapping
- Record keeping and initial reporting
- Ongoing technical support.
- Templates and tools to support you.

Education Hub

Our online hub is stacked full of case studies, industry news, market analysis, project guidance, FAQ's and more.

Management Ongoing over 25 years

Credit issuance Ongoing over 25 years

Ongoing Project Services

- Offset reporting to trigger credit issuance
- Audits
- Project variations
- Ongoing compliance, technical and strategic services.

Feasibility Services

We offer three levels of feasibility assessments to suit your needs at different stages of your carbon journey

We pull together essential information to help you validate eligibility, mitigate risk, enhance returns and assess the business case.

All CFF services are subject to our Standard Terms and Conditions.

1. Indicative Assessments

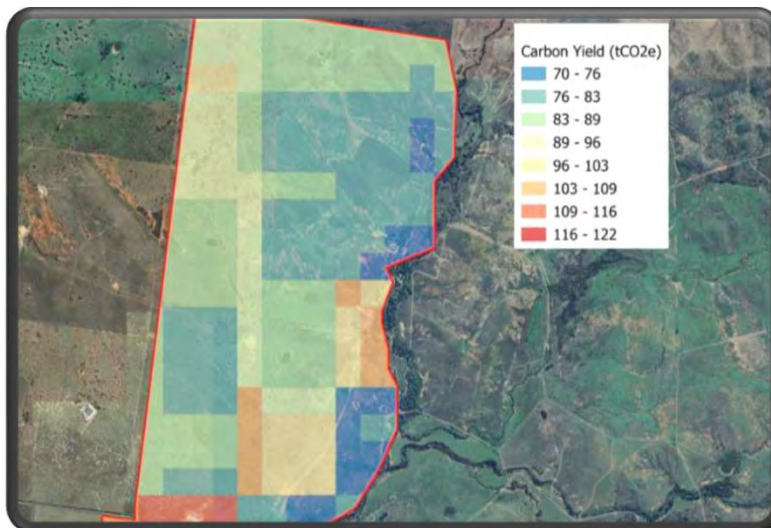
Cost

A quick back-of-envelope assessment of the carbon opportunity on your land as a first step. Indicative assessments include:

FullCAM yield heatmaps (reforestation projects only):

We map how many tonnes of CO₂e (carbon units) a native tree planting project would generate across a piece of land and present it via a colour scale. With this information, you can clearly see the carbon yield variation across landholdings, helping you to target higher yielding areas for planting.

**\$250 set up
+ 5c per Ha**



FullCAM yield modelling (plantation projects only):

Using particular species, rotation and management assumptions, we model FullCAM yields to help landholders assess whether a plantation carbon project stacks up. If the yield looks good, more detailed feasibility services can be considered.

**\$150 set up
+\$50 per simulation**

Feasibility Services

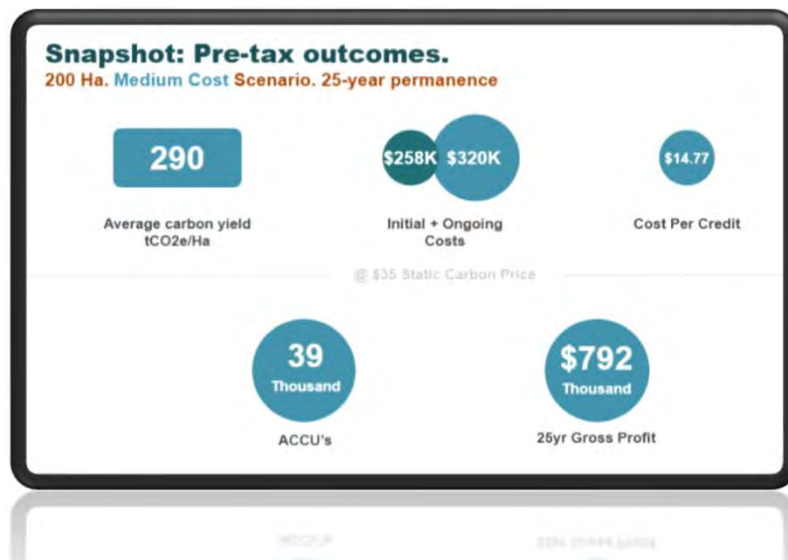
2. Feasibility Presentation

Cost

We meet with your team to present the carbon opportunity and answer your questions. Based on your feedback, we send a finalised PDF summary of high-level feasibility including:

- Eligibility criteria to ensure the project ticks all the boxes.
- A snapshot of the project's potential carbon yields, costs, profits, cash flow, risks and success factors.
- A breakdown of the different CFF service offerings and their costs.
- 1 hour Q&A style presentation

\$1,500 + GST



3. Feasibility Report

Cost

With this report in hand, you can develop a detailed risk assessment and financial budget for the project. **The report includes all the information required to get shareholders or the bank on board, specifically:**

- Eligibility and suitability assessment.
- Specific recommendations to enhance returns and manage risks.
- Comprehensive scenario comparisons of yield, costs, gross profits and cashflow – giving the full picture.

Price varies based on project complexity.

Average price range for a single property:
\$3,000 - \$5,000 + GST

Setup Services

4. Project Registration

Cost

4.1 Initial registration

We'll assist you to formally register the project with the Australian Government's Clean Energy Regulator (CER). You can select from the following CFF services:

- Act as the project's agent to liaise with the CER and administer applications to the ACCU Scheme :
 - Client (proponent) registration
 - Project registration
- Provide strategic advice and answer technical submission queries
- Contact relevant local authorities to confirm suitability, identify required approvals and support submissions.
- Produce GIS project mapping in a compliant format.
- Provide access to a range of CFF templates and checklists

Subject to quote based on the services you require

Average price range for a single property:
\$25,000 - \$38,000 + GST

+ Additional project areas (aggregated project)

If registering an aggregated project across multiple properties, we repeat all necessary registration activities from the list above for each of the additional areas.

Subject to quote based on the services you require

Average price range per area:
\$3,500 – \$8,500 + GST

4.2 Project area variations

If choosing to add additional project areas to a registered project after the initial registration has been lodged, CFF can act as agent to complete a project variation with the CER.

Subject to quote

Average price range to add a new project area:
\$10,000 - \$15,000 + GST

Setup Services

5. Project Establishment

Cost

5.1 Project master planning and kick-off

We support you to plan a successful project:

- Conduct a project kick-off meeting, ensuring all relevant stakeholders understand objectives, strategies, steps, processes, and accountabilities for project delivery.
- Create a detailed workplan with project stages, milestones, roles and tasks.
- Undertake mapping of project areas / carbon estimation areas (CEAs).
- Complete an eligibility assessment of project plans and areas (if required).

Subject to quote based on the services you require

5.2 Third party sourcing, quoting and cost optimisation

We'll connect you to our network of local suppliers, experts and contractors and support you in securing competitive quotes:

- Make introductions to relevant contractor, expert and supplier third parties.
- Source multiple quotes for project establishment deliverables.
- Review quotes for cost, quality and compliance, ensuring scope optimisation to meet the needs of the project.
- Provide access to a range of CFF templates including contractor quote requests and quality assurance checklists.

Subject to quote based on the services you require

5.3 Detailed design, compliance oversight and coordination support

We ensure the project is established to the desired timeline, optimised for performance and compliant with the method:

- Monitor progress against the workplan and provide regular timeline updates.
- Advise on strategies for cost optimisation, yield maximisation and optimal location of CEAs.
- Finalise detailed project planning and mapping in collaboration with contractors.
- Provide technical problem-solving advice and remote coordination support.
- Collate project establishment records in preparation for future reporting.
- Provide access to a range of CFF templates including ongoing management guide, due diligence checklist, emissions recording template and templates on all aspects of project establishment.

Subject to quote based on the services you require

Ongoing Project Services

6. Offset Reporting & Credit Issuance

Cost

At least every five years after implementation, we assist you to report progress to the regulator and claim your carbon credits:

- Connections to third-party contractors to undertake inspections or reviews.
- Collation of data and evidence needed for submission to the regulator.
- Complete, submit and monitor reporting paperwork.
- Support to set up an ANREU account to receive credits.

Price varies due to project complexity. Contact the CFF Team for a quote.

7. Additional Services

Cost

A lot can happen in twenty-five years! Our team is available to provide ongoing technical and strategic support as needed. We can quote for deliverables or provide service on an hourly basis.

Contact the CFF Team for a quote.



Testimonials

Some feedback from our illustrious clients

The CFF have provided practical and self-explanatory resources to get our project started. They broke down the design and planning stages of our project into a simple step-by-step process. This made it easy to for us to make decisions and engage local specialists in our area.

James Wentworth, CFO, ProTen

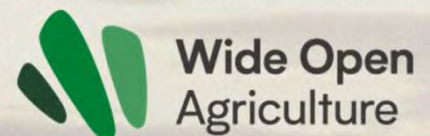
Having the CFF assist in this was fantastic. They were able to get different quotes and really look into the details of each of them and then advise on what third-party contractor would best work for us

Ben & Jasmin Fitzpatrick, Farm Managers, Bettergrow

CFF have been fantastic in working with us to meet our goals and trailblaze alongside us.

Jon Lambert, CEO, Heartwood Unlimited

A few of our clients...





The Carbon Farming Foundation (ABN 67 645 498 004) is a Corporate Authorised Representative (AFS Representative No.001298535) of True Oak Investments Ltd (ABN 81 002 558 956, AFSL 238184). The information in this document is general financial product advice only. It does not take your personal financial objectives, situation or needs into consideration. We recommend that you read our Financial Services Guide and consider seeking independent advice before making a financial decision.

Please note fees in this document are indicative only at the time of publishing, are exclusive of 10% GST and are based on the assumptions outlined herein. Every project is different, and a quote can be provided based on the specific details of your project. All third-party costs are excluded from any estimated fees herein.

Abbreviations

ACCU: Australian Carbon Credit Unit
CER: Clean Energy Regulator
CMI: Carbon Market Institute
CPI: Consumer Price Index
ACCU Scheme: Previously Emissions Reductions Fund

